

# FR FLAMSÄKER

## TEIDE FR Flamsäker



1910-002    1910-169    1910-810    1910-173    1910-266    1910-470    1910-499



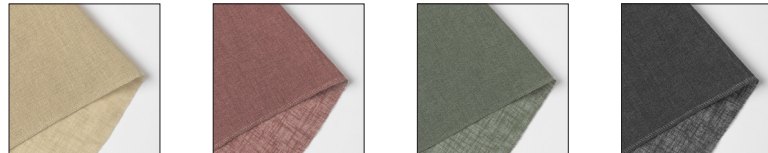
1910-557    1910-560    1910-606    1910-625    1910-666

RAPPORT	BREDD CM	SEK/M KUPONG	VIKT
-	300	484	170 g/m <sup>2</sup>

## FUJI FR Flamsäker



1930-002    1930-165    1930-172    1930-625    1930-817    1930-833



1930-264    1930-498    1930-650    1930-898

RAPPORT	BREDD CM	SEK/M KUPONG	VIKT
-	300	515	150 g/m <sup>2</sup>

## SALLA FR Flamsäker



1920-002    1920-802    1920-162    1920-810



1920-160    1920-170    1920-175    1920-902

RAPPORT	BREDD CM	SEK/M KUPONG	VIKT
-	300	374	93 g/m <sup>2</sup>

# FR FLAMSÄKER

AKKA FR Flamsäker

3 METER



1400-001



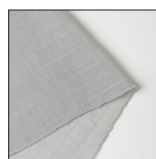
1400-002



1400-167



1400-805



1400-820



1400-265



1400-475



1400-495



1400-533



1400-560



1400-577



1400-601



1400-603



1400-620



1400-625



1400-650

RAPPORT

BREDD CM

SEK/M KUPONG

VIKT

-

300

281

105 g/m<sup>2</sup>

ELBRUS FR Flamsäker

3 METER

No Noise



1300-001



1300-002



1300-165



1300-820



1300-835



1300-475



1300-495



1300-560



1300-625



1300-650



1300-603



1300-901



1300-264



1300-173



1300-176



1300-179

RAPPORT

BREDD CM

SEK/M KUPONG

VIKT

-

300

523

280 g/m<sup>2</sup>

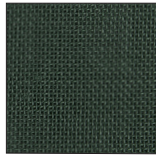
# FR FLAMSÄKER

**MATTERHORN** FR Flamsäker (Trevira CS)

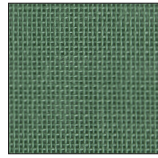
3 METER



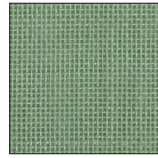
1200-180



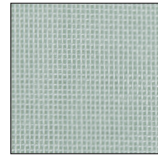
1200-675



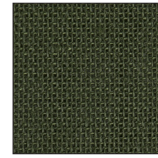
1200-615



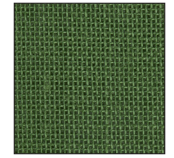
1200-610



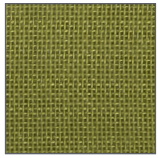
1200-605



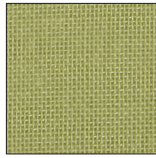
1200-670



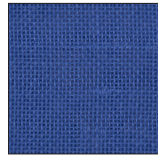
1200-660



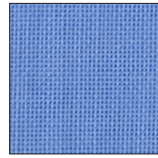
1200-630



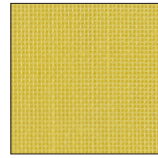
1200-625



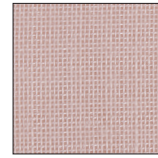
1200-540



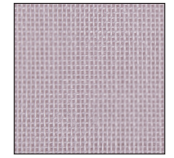
1200-530



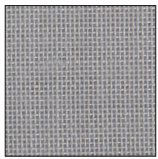
1200-255



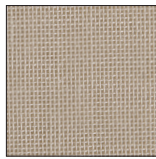
1200-480



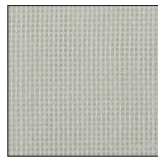
1200-485



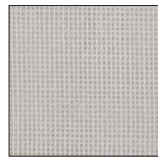
1200-810



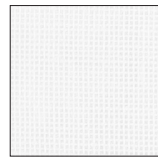
1200-170



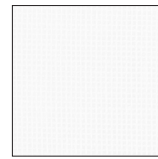
1200-600



1200-160



1200-100



1200-001

RAPPORT

BREDD CM

SEK/M KUPONG

VIKT

-

300

593

105 g/m<sup>2</sup>

**LEIA SMALL** FR Flamsäker

Design: Tuula Falk

3 METER



1655-266



1655-175

RAPPORT

BREDD CM

SEK/M KUPONG

VIKT

ca 76

300

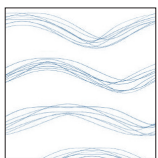
778

170 g/m<sup>2</sup>

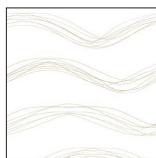
**SEADANCE** FR Flamsäker

Design: Tuula Falk

3 METER



1650-560



1650-175

RAPPORT

BREDD CM

SEK/M KUPONG

VIKT

ca 102

300

778

170 g/m<sup>2</sup>

# FR FLAMSÄKER

## VILDTRIPPA FR Flamsäker

Design: Hanna Werning

3 METER



1660-721



1660-723



1660-725



1660-727

RAPPORT

ca 65

BREDD CM

300

SEK/M KUPONG

778

VIKT

170 g/m<sup>2</sup>

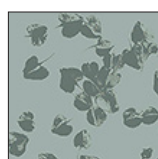
## SINGLANDE BLAD STOR FR Flamsäker

Design: Kiki Plesner-Löfroth / Plesner Patterns

3 METER



1816-560



1816-625

RAPPORT

-

BREDD CM

300

SEK/M KUPONG

716

VIKT

90 g/m<sup>2</sup>

## SINGLANDE BLAD SMÅ FR Flamsäker

Design: Kiki Plesner-Löfroth / Plesner Patterns

3 METER



1815-560



1815-625

RAPPORT

-

BREDD CM

300

SEK/M KUPONG

716

VIKT

90 g/m<sup>2</sup>

## TWITTERS 2 FR Flamsäker

Design: Lisa Larson

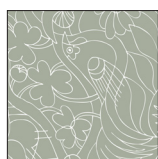
3 METER



1805-475



1805-560



1805-603

RAPPORT

ca 64

BREDD CM

300

SEK/M KUPONG

716

VIKT

90 g/m<sup>2</sup>

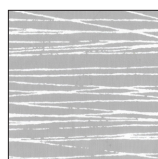
# FR FLAMSÄKER

## JAPAN FR Flamsäker

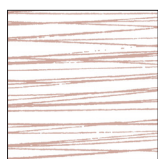
Design: Göta Trägårdh



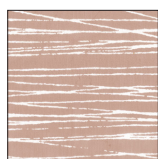
1110-820



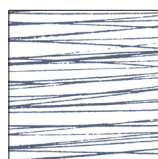
1110-821



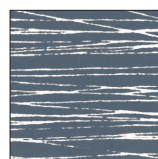
1110-475



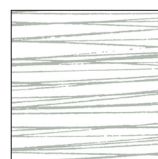
1110-476



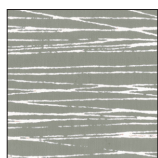
1110-560



1110-561



1110-625



1110-626

RAPPORT	BREDD CM	SEK/M KUPONG	VIKT
ca 62	140	466	90 g/m <sup>2</sup>

## HAPPY LEAVES FR Flamsäker

Design: Sven Fristedt

3 METER



1830-745



1830-755

RAPPORT	BREDD CM	SEK/M KUPONG	VIKT
ca 48	300	716	90 g/m <sup>2</sup>

## EKLÖV FR Flamsäker

Design: Lena Boije

3 METER



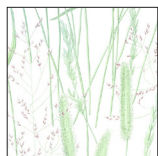
1109-713 / 1809-713

RAPPORT	BREDD CM	SEK/M KUPONG	VIKT
ca 64	300	716	90 g/m <sup>2</sup>

# FR FLAMSÄKER

**GRAMINA** FR Flamsäker  
Design: Lena Boije

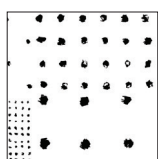
3 METER



1808-600

RAPPORT	BREDD CM	SEK/M KUPONG	VIKT
ca 64	300	716	90 g/m <sup>2</sup>

**NOPPE** FR Flamsäker  
Design: Sven Fristedt



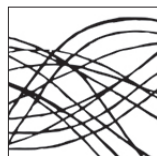
1101-900

RAPPORT	BREDD CM	SEK/M KUPONG	VIKT
ca 64	140	466	75 g/m <sup>2</sup>

**RAPID** FR Flamsäker  
Design: Göta Trägårdh



1105-901



1105-900

RAPPORT	BREDD CM	SEK/M KUPONG	VIKT
ca 102	140	466	90 g/m <sup>2</sup>

**COSMOS** FR Flamsäker  
Design: Göta Trägårdh



1106-701

RAPPORT	BREDD CM	SEK/M KUPONG	VIKT
ca 64	140	466	90 g/m <sup>2</sup>

# FR FLAMSÄKER

**MAXI X** FR Flamsäker  
Design: *Sven Fristedt*



1107-901

RAPPORT	BREDD CM	SEK/M KUPONG	VIKT
ca 102	140	466	75 g/m <sup>2</sup>